



# NFCT Trail Update

---

**Map:** 7

**Date of Update:** 3-10-2015

**Location:** Normandeau Long Term Parking

**Waterbody:** Upper Ammonoosuc River

**Town:** Groveton, NH

**Lat/Long:** 44° 35' 24.89" N, 71° 31' 14.51" W

**Elevation:** 900 feet

**Overview:** Barry Normandeau, owner of [Normandeau Trucking, Inc.](#), has allowed for long term parking in a designated area of his parking lot off of Route 3 in Groveton, NH. The opportunity for long term parking in this location allows for paddlers to leave a vehicle while they access extended trips in the area. A popular trip is leaving a vehicle at the Normandeau Long Term Parking Area and either getting a shuttle from Gord (603-449-2236) or leaving a car at Gord's Corner Store in Milan, NH (fee for parking at Gord's, ask about the discount for NFCT members).

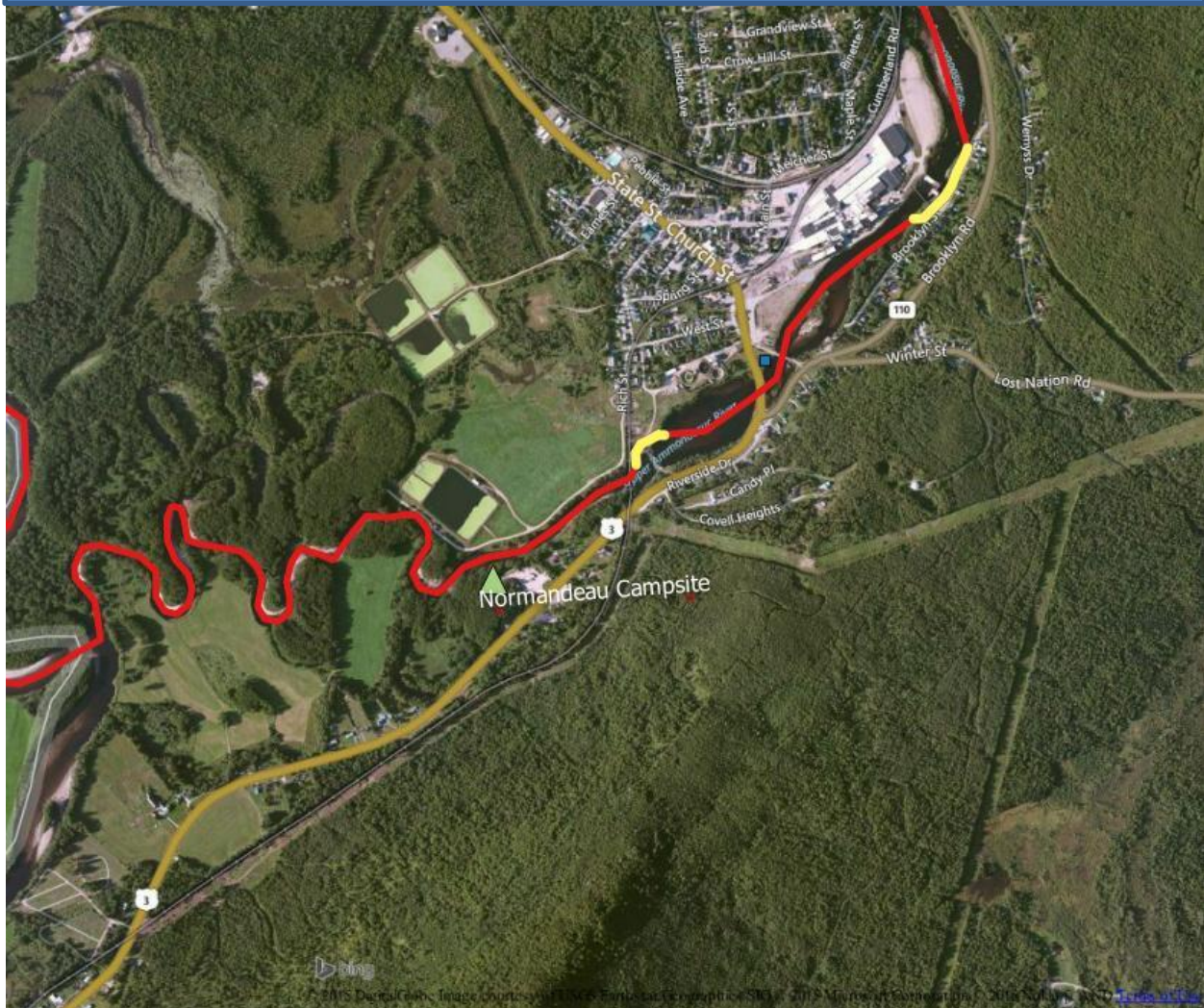
**Site Information:** The long term paddling parking area is located .5 miles south of the junction of Route 3 and Route 110. Look for the Normandeau Trucking and NFCT Long Term Parking signs, clearly visible from Route 3. Once you turn into the Normandeau Trucking, Inc. parking area the section of the parking lot that is devoted to paddler parking is located immediately to your left.

*The NFCT works to maintain landowner agreements and maintain the access, portage, and campsites along the 740-mile trail corridor. Please [become a member](#) or give to the [Trail Fund](#) to keep the Trail alive.*

### Close-up View of NFCT Map 7



## Satellite Imagery of Normandeau Campsite: Location of the Long Term Parking Area





# Satellite Imagery site map of Normandeau Campsite: Location of the Long Term Parking Area

